

Can we throw practicality out the window? Or roof? When did we all become obsessed with billable hours? And taking a 15-minute lunch. At our desk. When did being practical suck all the life out of being spontaneous? **Maybe it's time for impracticality to make a comeback.** And what better way than with an available **260-hp turbocharged engine** that goes **from 0 to 60 in 5.5 seconds** and back to 0 in just 116 feet! **A soft top that drops in seconds to get all the cobwebs out of your head.** And a two-hour lunch right around the corner. **Just something to rethink about.**



Rethink Practical. Rethink American.

The 2008 Saturn SKY® Roadster (limited availability).



Every route is a scenic one. Curves. Hairpins.

The road to your dry cleaner. The SKY is designed, built and driven for the pure pleasure of taking on every twist and turn you come across. The wide stance is engineered to hug the road while its firm yet forgiving suspension with Bilstein™ coilover monotube shocks ensures that you feel all of the bends and less of the bumps.

HELLO sky, meet SKY.

Why can't the weekend start on Wednesday?

It's a lot easier to get a jump on the weekend with a 172-hp, 16-valve, 2.4-liter engine enlivened by Variable Valve Timing, which controls both the intake and exhaust valve timing to maximize horsepower at all speeds. And with a limited slip differential, pedals set for intuitive heel-toe driving, and a short-throw five-speed manual transmission at your disposal, it's only a matter of time before you make your next getaway.



SKY Red Line turbo engine



SKY Roadster shown in Silver Pearl



OnStar. Your SKY comes with one year of OnStar,¹ which can provide you with Advanced Automatic Crash Notification. So even if you're involved in a collision and your air bags don't deploy, your vehicle can automatically send a signal to an OnStar Advisor who will contact you to see if you need help.

Rethink amphitheater.

Both driver and passenger sit cradled by deep, bolstered sport seats that provide extensive lateral support during cornering. Everything in the SKY heightens the driving experience. Whether it's the motorcycle-style speedometer and tachometer. The rich piano-black accents. The iPod®/MP3 input jack.² XM Satellite Radio³ with 170 channels of music, sports, news and talk. Or the available 225-watt Monsoon® audio system with separate subwoofer.



Let's be careful out there. Proper UV protection goes without saying. But you'll also need to be equipped with dual-stage front air bags with the Passenger Sensing System,⁴ and a security system that immobilizes the engine if the wrong key is used.



Hold on. Front and rear stabilizer bars use ball-joint links to minimize body roll and maintain flat cornering. And a near 50/50 weight distribution keeps everything on an even keel.

¹Call 1-888-4ONSTAR (1-888-466-7827), visit onstar.com, and see inside back cover for system limitations and details. ²iPod® is a mobile digital device. iPod® is a trademark of Apple, Inc., registered in the U.S. and other countries. All rights reserved. ³Available only in the 48 contiguous United States. Includes three months trial service. Required \$12.95 monthly subscription sold separately. All fees and programming subject to change. Subscription subject to customer agreement. For more information, visit gm.xmradio.com. ⁴Be sure every occupant is properly restrained. See inside back cover of this brochure for an important note about air bags and child safety.



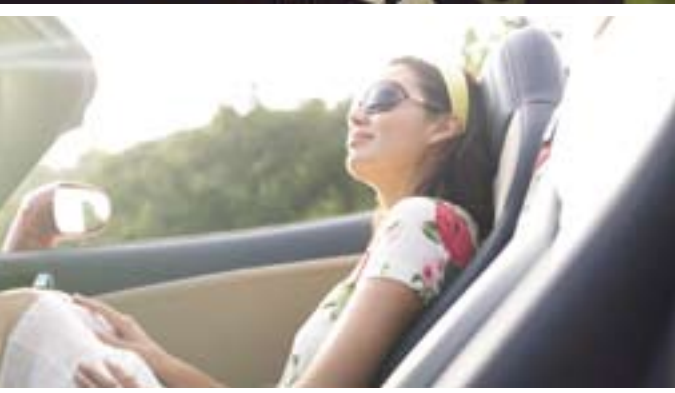
IT'S AMAZING WHAT
WILL FIT INTO **50** cubic feet
of space.



SKY Roadster shown with available Red Leather appointments

Don't buy it because it's American! Buy the SKY Roadster because it's amazing. Buy it because it turns heads and changes opinions. Buy it because it's wildly impractical, yet one of the best decisions you'll ever make. Buy it because it raises eyebrows and the little hairs on the back of your neck. Buy it because it looks good in your driveway. You look good in it. And for the way it makes you feel driving with the top down. Not a care in the world. And the feeling of owning a really great car. Period. **Just something to rethink about.**







SERIOUSLY,
has anyone ever not looked good
in a **CONVERTIBLE?**





Curves ahead and behind. Hydroforming – shaping with water – is how we sculpted the most distinctive of the SKY's generous, angular curves. It's an innovative technique chosen to ensure that the silhouette of the car built for you is as striking as the one Saturn designers first sketched. And it's seen clearly in the flowing, muscular hood line, the way the headlamps appear melded into the body, and the rear quarter panels that complete the sweeping, aerodynamic profile. Just try to keep both eyes on the road.







260-hp turbo.

0 TO 60 IN 5.5 SECONDS.¹

Fasten your sunscreen. The SKY Red Line was tested on Germany's famed Nürburgring motorsports track. We gave it a performance-tuned suspension with stiff springs and firm shocks that helps you achieve a maximum lateral acceleration of 0.90g. We put on 18" polished alloy wheels wrapped in Goodyear Eagle GS-2 P245/45 V-rated performance treads to stick to the road. And then stainless steel pedal covers, a digital turbo-boost gauge, front air vents to cool the front discs, and dual polished aluminum exhaust tips to complete the package. The only thing you'll need to add is the SPF.





Good genes run
in the family.

Say hello to our full line of vehicles, from the small and sporty to the midsize sedan and all the way to an 8-passenger crossover. To learn more, **visit saturn.com**.

The Saturn showroom
has a very familiar
address. Yours.

To schedule your at-home or in-office test drive,
visit saturn.com to find a participating retailer near you.





Shown from left to right: OUTLOOK,[™] ASTRA[®] 3-door, AURA,[™] SKY (limited availability), ASTRA 5-door, VUE[®] (ASTRA available late 2007.)

What if a car company didn't act like a car company?

You'd ask yourself, what are they thinking? This can't be right. But it is. In fact, it's what we've been doing since day one. That's the Saturn way. And you notice it the second you walk into a Saturn retailer. We offer a no-hassle, no-haggle philosophy. We give you straightforward answers. We can bring cars to you to test-drive!¹ We give you 30 days to make sure the vehicle you've chosen is the right one.² And you know what? After all is said and done, we wouldn't change a single thing.

Just something to rethink about.

FEEL FREE TO PICK YOUR SATURN APART. (WE DID.)

Quality control is something everyone at Saturn takes seriously. In fact, they don't even need the words "Quality Control" in their job title to make it their number-one priority. It's the responsibility of everyone who touches a Saturn, from the people who design, engineer, assemble and test them to the people who hand you the keys. It's what makes a Saturn, well, a Saturn.



SATURN

**100,000 MILE
WARRANTY**
5-YEAR POWERTRAIN

The amount of care and attention doesn't end the moment you leave the Saturn retailer. You'll get the best coverage in America: the Saturn 100,000-mile/5-year Powertrain Limited Warranty, plus Roadside Assistance and Courtesy Transportation.³

POWERTRAIN LIMITED WARRANTY

This fully transferable warranty is for 2008 Saturn vehicles registered in the U.S. See your Saturn retailer for terms and conditions. Covered for 5 years/100,000 miles (whichever comes first): most engine, transmission, transfer case and axle assemblies.

¹At participating retailers. ²See inside back cover of this brochure for information on Saturn's Vehicle Exchange Program. ³Whichever comes first. See retailer for details.

2008 Accessories

- Trunk storage bag
- Console saddle bag
- Sport Pedal Package
- Cat-back exhaust system (SKY)¹
- Turbo cat-back exhaust system (SKY Red Line)
- Chrome 18" alloy wheels²
- Performance suspension kit
- Windscreen
- Cold air intake³
- Molded splash guards – front & rear
- Tonneau cover
- Premium all-weather floor mats
- Rear spoiler
- Portable music player connector cable
- Highway emergency kit
- Lockable gas cap
- Wheel locks
- Smokers Package
- Car care kit
- Stainless steel license plate frame

1 The cat-back exhaust system meets the 95 dBA noise limit imposed by some states on exhaust system modifications, as measured by SAE J1169. Some states and local jurisdictions impose more stringent requirements. Be sure to check whether this aftermarket installation meets the noise limits where you will register and drive your vehicle. **2** Use only GM-approved tire and wheel combinations. See your retailer for details. **3** The driver is responsible for compliance with all local noise ordinances and may be fined in areas where the Air Intake System exceeds local decibel limits.

IMPORTANT WORDS ABOUT THIS CATALOG

We have tried to make this catalog comprehensive and factual. We reserve the right, however, to make changes at any time, without notice, in prices, colors, materials, equipment, specifications, models and availability. Specifications, dimensions, measurements, ratings and other numbers in this catalog and other printed materials provided at the retailer or affixed to vehicles are approximates based upon design and engineering drawings and prototypes and laboratory tests. Your vehicle may differ due to variations in manufacturer and equipment. Because some information may have been updated since the time of printing, please check with your Saturn retailer for complete details. Saturn reserves the right to lengthen or shorten the model year for any product for any reason, or to start and end model years at different times.

A NOTE ABOUT AIR BAGS AND CHILD SAFETY

Always use safety belts and the correct child restraint for your child's age and size. Never place a rear-facing infant restraint in the front seat of any vehicle equipped with an active frontal air bag. Air bag inflation can cause severe injury or death to anyone too close to the bag when it deploys. Be sure every occupant is properly restrained. See your vehicle owner's manual and child-safety seat instructions for more information.

ONSTAR® INFORMATION

OnStar services require vehicle electrical system (including battery), wireless service and GPS satellite signals to be available and operating for features to function properly. OnStar acts as a link to existing emergency service providers. Subscription Service Agreement required. Call 1-888-4ONSTAR (1-888-466-7827) or visit onstar.com for OnStar's Terms and Conditions, Privacy Policy, and system limitations and details.

SATURN'S VEHICLE EXCHANGE PROGRAM

Within the first 30 days or 1,500 miles of delivery, whichever comes first, the original purchaser may exchange his or her Saturn vehicle if not completely satisfied. In the event that an owner returns his or her vehicle, he or she will exchange it for another 2008 Saturn vehicle. See retailer for limitations and restrictions. All the same factory-supported initiatives will be included on the exchange vehicle that were on the original vehicle. The vehicle must be returned in the condition in which it was delivered, without damage or excessive wear and tear. If non-warranty repairs equal to or greater than \$300 have been performed or are necessary, the vehicle is not eligible to be returned; if less than \$300, the damage must be repaired or the estimate deducted from the credit toward the exchange vehicle.

NEW VEHICLE LIMITED WARRANTY

This warranty is for Saturn vehicles registered in the United States. See your Saturn retailer for terms and conditions. Covered for 3 years/36,000 miles (whichever comes first): the complete vehicle, tires, towing to your nearest Saturn retailer, cosmetic corrosion resulting from defects, repairs made to correct any vehicle defect, with no charge for most warranty repairs. Covered for 6 years/100,000 miles (whichever comes first): rust-through corrosion. Covered for 8 years/100,000 miles (whichever comes first): certain hybrid components. See retailer for details.

CORROSION PROTECTION

Saturn vehicles are designed and built to resist corrosion. All body and sheet metal components are warranted against rust-through corrosion for 6 years or 100,000 miles, whichever comes first. Application of additional rust-inhibiting materials is not required under the corrosion coverage and none is recommended. See your Saturn retailer for terms of this limited warranty.

AN IMPORTANT NOTE ABOUT ALTERATIONS AND WARRANTIES

Installations or alterations to the original equipment vehicle (or chassis) as distributed by GM are not covered by the Saturn New Vehicle Limited Warranty. The special body company, assembler, equipment installer or upfitter is solely responsible for warranties on the body or equipment and any alterations (or any effect of the alterations) to any of the parts, components, systems or assemblies installed by GM. GM is not responsible for the safety or quality of design features, materials or workmanship of any alterations by such suppliers.

ASSEMBLY

Saturn vehicles and their components are assembled or produced by different operating units of GM, its subsidiaries or suppliers to GM worldwide. We sometimes find it necessary to produce Saturn vehicles with different or differently sourced components than originally scheduled. Because some options may be unavailable when your vehicle is assembled, we suggest you verify that your vehicle includes the equipment you ordered, or if there are changes, that they are acceptable to you.

ENGINES

Saturn products are equipped with engines produced by GM Powertrain or other suppliers to GM worldwide. The engines in Saturn products may also be used in other GM makes and models.

FUEL ECONOMY

Commencing with 2008 model-year vehicles, EPA revised its methods for estimating vehicle fuel economy. The new test methods will likely lower mpg estimates as compared to 2007 and previous model-year vehicles. These new methods are intended to better represent current driving styles, varying road and weather conditions, and certain other external factors.

UPDATED SERVICE INFORMATION

Saturn retailers receive useful service bulletins about Saturn products. See your retailer for more information.

GM MOBILITY

GM Mobility assists people with unique transportation needs by offering a variety of resources, including aftermarket adaptive equipment. Speak to a knowledgeable Assistance Center representative at 1-800-323-9935 (TTY users: 1-800-833-9935) or visit gmmobility.com for more information.

©2007 Saturn Corporation. Saturn and its logo are registered trademarks of Saturn Corporation. SKY is a registered trademark of Saturn Corporation.



Trunk storage bag



Console saddle bag

SKY Specifications/Features

WEIGHTS AND CAPACITIES	SKY	SKY RED LINE
Curb weight (lbs.) (manual/automatic)	2,965/2,967	3,036/3,038
Cargo-area volume (cu. ft.) top up/stored	5.4/2.0	5.4/2.0
Fuel/capacity (approx. gal.)	Unleaded 87 octane (premium recommended)/13	Unleaded 87 octane (premium recommended)/13
POWERTRAIN		
Engine	2.4-liter, 16-valve inline-4, VVT intake/exhaust, cast aluminum block and cylinder head	2.0-liter, 16-valve, turbocharged, intercooled, direct injection inline-4, VVT intake/exhaust, cast aluminum block and cylinder head
Horsepower (hp/kW @ rpm)	172/128 @ 5,800 rpm	260/194 @ 5,300 rpm
Torque (lb.-ft./Nm @ rpm)	167/226 @ 4,500 rpm	260/352 @ 2,500–5,200 rpm
Bore and stroke/compression ratio	88 x 98 mm/10.4:1	86 x 86 mm/9.2:1
Transmission	5-speed manual with short-throw shifter Available electronically controlled 5-speed automatic	5-speed manual with short-throw shifter Available electronically controlled 5-speed automatic
FUEL ECONOMY ESTIMATES (CITY/HWY MPG) ¹		
Manual transmission	19/25	19/28
Automatic transmission	19/24	19/26
ACCELERATION ²		
0–60 MPH	7.2 seconds ²	5.5 seconds ²
Quarter mile	15.7 seconds ²	13.9 seconds ²

INTERIOR DIMENSIONS

Headroom	38.4"
Legroom	42.7"
Hip room	50.6"
Shoulder room	52.7"
Passenger volume	50 cu. ft.

STEERING

Type	Hydraulic-assisted rack and pinion
Overall ratio	16.4:1
Lock-to-lock turns	2.7
Turning circle	34.9 ft.

CHASSIS AND BODY

	SKY	SKY RED LINE
Front-engine/rear-wheel drive, near 50/50 weight distribution	●	●
Hydroformed steel clamshell hood, inner doors and rear quarter panels	●	●
Limited slip differential	●	●
Lower-dominant, integral hydroformed tube and stamped steel body structure	●	●
Four-wheel independent short-long arm suspension	●	●
Bilstein™ coilover monotube shocks	●	●
Front and rear lightweight hollow stabilizer bars with ball-joint links	●	●
Four-wheel anti-lock disc brakes (vented front: 11.7"/rear: 10.9")	●	●
Stainless steel high-flow exhaust system with polished aluminum tip	●	–
18" flangeless painted alloy wheels	●	–
Goodyear Eagle RS-A P245/45R18 96V performance all-season tires	●	–

COMFORT AND CONVENIENCE

Power windows, power exterior mirrors and power programmable door locks	●	●
Air conditioning with electronic control for precise adjustments	●	●
Remote keyless entry with extended range	●	●
Sound-insulated cloth convertible top with defroster-equipped rear glass window	●	●
Leather-wrapped steering wheel, cruise control and driver information controls	●	●
CD/MP3 player with AM/FM stereo, MP3 playback, 6 speakers, auxiliary input jack, Radio Data System (RDS), speed-compensated volume and TheftLock®	●	●
6-disc, in-dash CD changer and MP3 playback, speed-compensated volume and TheftLock ³	○	○
Monsoon® premium 225-watt 7-speaker audio system	○	○
XM Satellite Radio with three-month trial service ⁴	●	●
Premium Trim Package: leather seat inserts, steering wheel audio controls, metallic-finish sill plates, stainless steel pedal covers, and leather-wrapped shift knob ⁵	○	–

SAFETY AND SECURITY

OnStar® with one year Safe & Sound Plan ⁶	●	●
Dual-stage front air bags with Passenger Sensing System ⁷	●	●
StabiliTrak® with Traction Control and selectable competitive mode	●	●
Three-point safety belts with pretensioners and load-limiting retractors	●	●
Security system and engine immobilizing theft-deterrent feature	●	●
Automatic projector-beam halogen headlamps and daytime running lamps	●	●
Projector-beam halogen foglamps	●	●
Tire Pressure Monitor	●	●

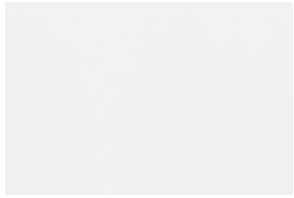
ADDITIONAL SKY RED LINE FEATURES

Performance-tuned suspension including larger stabilizer bars, stiffer springs and unique shock tuning	–	●
18" flangeless polished alloy wheels	–	●
Goodyear Eagle F1 GS-2 P245/45R18 96V performance tires	–	●
Front brake cooling vents	–	●
Digital turbo-boost gauge and Red Line gauge cluster graphics	–	●
Unique lower front grille and foglamp trim	–	●
Stainless steel high-flow exhaust system with dual polished aluminum tips	–	●
Steering wheel audio controls	–	●
Stainless steel pedal covers and metallic sill plates	–	●
Floor mats featuring Red Line embroidery	–	●
Leather seat inserts	–	○
Blackout headlamp bezels	–	●

● = standard ○ = available – = not available

1 EPA estimates. Visit fueconomy.gov for updated information. **2** Based on GM testing. **3** Requires Monsoon premium audio system. **4** Available only in the 48 contiguous United States. Includes three months trial service. Required \$12.95 monthly subscription sold separately. All fees and programming subject to change. Subscription subject to customer agreement. For more information, visit gm.xradio.com. **5** Steering-wheel audio controls standard on Red Line. Leather-wrapped shift knob only when 5-speed manual transmission is ordered. **6** Call 1-888-4ONSTAR (1-888-466-7827), visit onstar.com, and see left panel for system limitations and details. **7** Air bag inflation can cause severe injury or death to anyone close to the bag when it deploys. Be sure every occupant is properly restrained. See left panel for an important note about air bags and child safety.

Exterior Paint



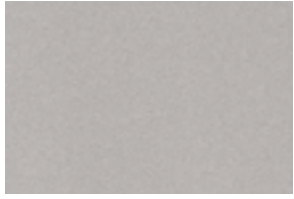
Polar White



Black Onyx



Chili Pepper Red



Silver Pearl



Midnight Blue



Forest Green



Sunburst Yellow*



Bluestone



Techno Gray

Interior Colors



Black Leather



Red Leather



Tan Leather



Black Cloth

Cloth Top Colors



Tan



Black

Color Combinations

EXTERIOR PAINT	INTERIOR CLOTH/MATCHING TOP	AVAILABLE LEATHER/MATCHING TOP
Polar White	-	Black/Black, Red/Black, Tan/Tan
Black Onyx	Black/Black	Black/Black, Red/Black, Tan/Black, Tan/Tan
Chili Pepper Red	Black/Black	Black/Black, Tan/Tan
Silver Pearl	Black/Black	Black/Black, Red/Black
Midnight Blue	-	Black/Black, Tan/Tan
Forest Green	-	Black/Black, Tan/Tan
Sunburst Yellow*	-	Black/Black
Techno Gray	Black/Black	Black/Black, Red/Black

*Available at additional charge.

Dimensions



Wheels



18" PAINTED ALLOY
(Standard)



18" POLISHED ALLOY
(Red Line only)



18" CHROME
(Optional)

See all of our vehicles at SATURN.COM

SKY
Roadster

ASTRA
Sport Compact

AURA
Sport Sedan

VUE
Compact SUV

OUTLOOK
Crossover

Saturn 2008 SKY

Rethink American



This brochure is printed on 60-lb. Environment Ultra Bright FSC-Certified Paper made with 20% FSC-Certified Virgin Fiber and **80% Post-Consumer Fiber**. The paper comes entirely from Green-e Certified renewable energy, and it's Green Seal-Certified as well as Certified Processed Chlorine-Free (PCF) by the Chlorine Free Product Association (CFPA). **It represents Saturn's commitment to helping the environment.**



Mixed Sources
Product group from well-managed
forests and recycled wood or fiber
www.fsc.org Cert. No. SA-COC-1512
© 1996 Forest Stewardship Council

